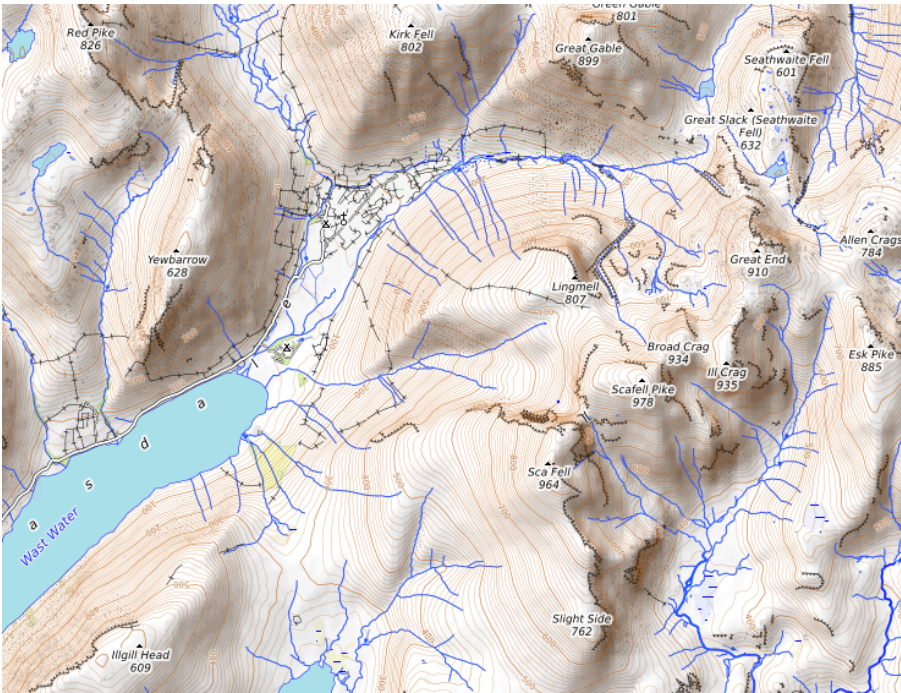


Scafell Pike – Mountain summits and surface water



The map to the left shows Scafell Pike and the surrounding area.

Label the map below with the names and heights of the following mountain summits:

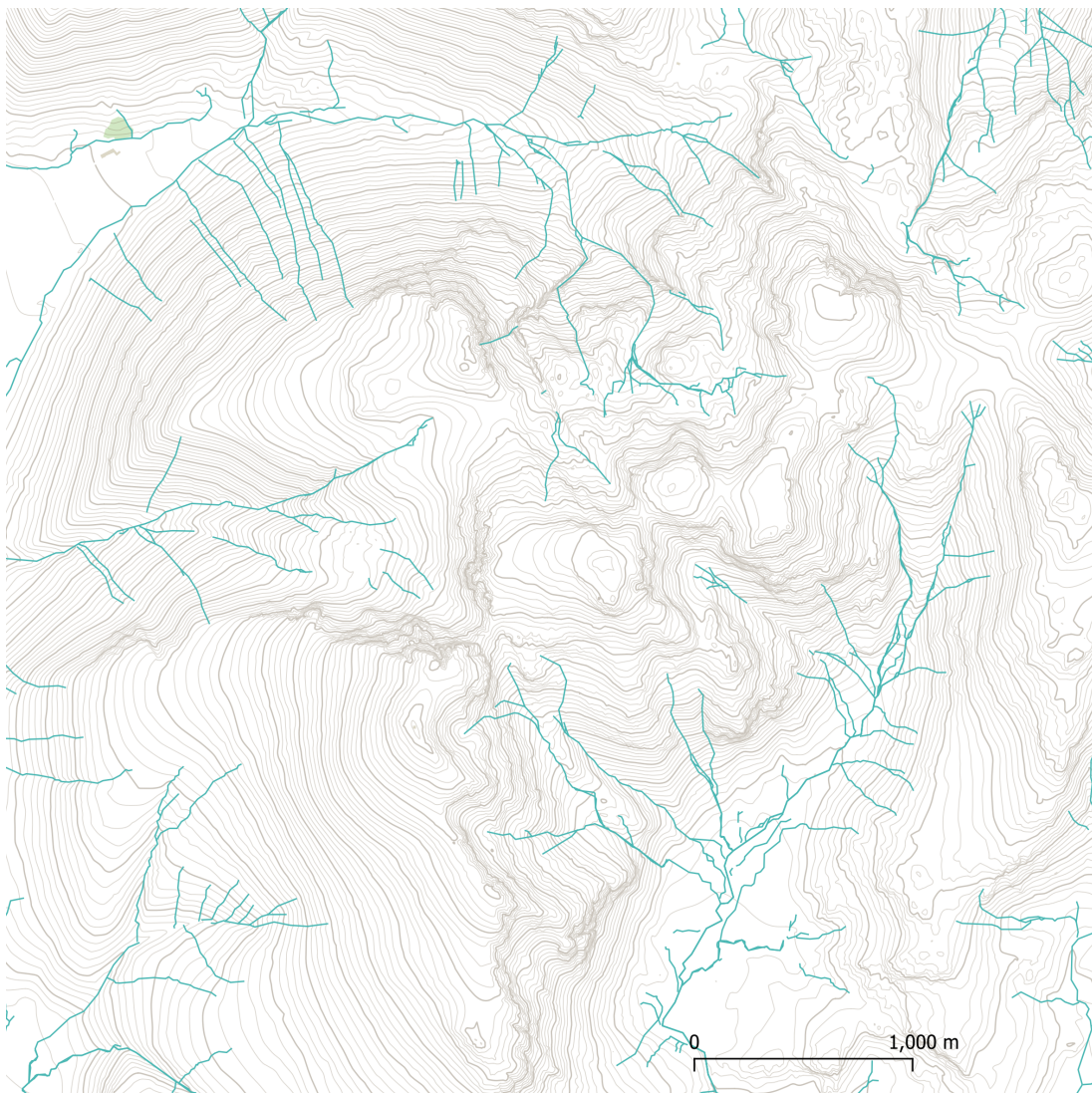
Scafell Pike – 978m

Sca Fell – 964m

Lingmell - 807m

Next, colour the missing areas of surface water in blue.

Map data: © OpenStreetMap-Mitwirkende, SRTM | Map display: © OpenTopoMap (CC-BY-SA)



Fun fact:

- The deepest lake in England, Wast Water, lies at the foot of Scafell Pike. It is 79 meters deep.